

12

CLOUD

TWELVE

Experiences that feel good

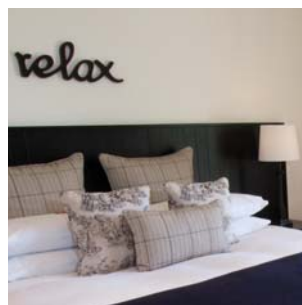
THE CLOUD 12 COLLECTION

A collection of New Zealand stays and activities that take you beyond Cloud 9 to Cloud 12. Cloud 12 is a mix of luxury and boutique experiences, handpicked by Angela Scott, Tourism Marketing Specialist with over 15 year's experience in the travel trade industry.

When you pick a Cloud 12 experience you'll receive a guaranteed level of quality and service. Whether its staying in a luxury lodge, boutique bed & breakfast, to soaking in a thermal hot pool, or inhaling a fresh crayfish. Cloud 12 is about embracing experiences that feel good.

STAYS

Experiences that feel good

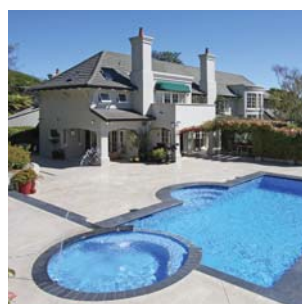


01

ALYSTONE BOUTIQUE RETREAT MARTINBOROUGH

Located along the Classic NZ Wine Trail, in the world renowned wine village of Martinborough.

Six French provincial style rooms, overlook neighbouring vineyards, and the spectacular Tararua Mountain Range. Each room features classic furnishings and private en-suites bathrooms. Guest facilities: guest library & breakfast room, guest platters, vintage bikes & petanque. A relaxing retreat for wine & food enthusiasts. 90 minute drive from Wellington and 3 hours from Hawkes Bay. Stay includes B&B.



02

GREENMANTLE ESTATE LODGE KAPITI COAST

The only luxury lodge on the West coast of the lower North Island.

Located along the stunning Kapiti Coast, Greenmantle features six suites, set amid established gardens. Fine dining and wining with an Italian twist awaits guests, along with a delectable multi-course breakfast. Guest facilities: outdoor heated swimming pool, jacuzzi and gym. Activities – golf at Paraparaumu Golf Course (top 100 in the world), Kapiti Island, cooking classes and cultural tours. Stay includes DBB.



03

HOTEL CHATHAMS CHATHAM ISLANDS

Family owned and operated since 1991, the Qualmark rated four star hotel offers the very best of Chatham Islands hospitality.

Centrally located by the sea, in the main settlement of Waitangi, the Hotel features 19 modern and spacious guest rooms. Fresh seafood features on the menu of the fully licensed restaurant and lounge bar. Management also oversee all bookings for Travellers Rest, an intimate and elegant four bedroom Bed & Breakfast, just 50 metres from the hotel. Island activities: bird watching, cultural tours, fishing, diving, shark cage diving, walking, geology. Regular direct flights from Auckland, Wellington & Christchurch.

STAYS

Experiences that feel good



04

LAKE TIMARA LODGE MARLBOROUGH

Stunning setting, incredible gardens, intimate country lodge, world class cuisine.

Set amidst 25 acres of English-style gardens, the four room country lodge is one of New Zealand's most exclusive hideaways. Experience the gourmet pleasures of chef & host Louis Schindler. Stay includes DBB. Guest facilities: private lake, in-ground pool, tennis court, private tours to the lodges own winery – Spy Valley vineyard. From the lodge explore Marlborough's wine & food, and Marlborough Sounds.

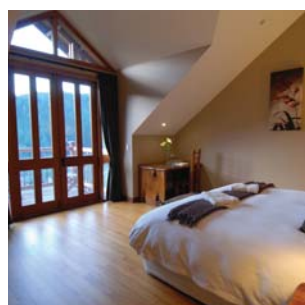


05

SOLITAIRE LODGE ROTORUA

Recently refurbished, this award winning luxury lodge is situated on the shores of Lake Tarawera.

Ten elegant guest suites and villas, overlook the lake, and Mt Tarawera, featuring scrumptious bathrooms and luxurious furnishings. A stay at Solitaire Lodge includes full board. Guests can bath in the thermal areas along the lake, walk to Tarawera Falls, explore Mount Tarawera by helicopter or fish the lake for rainbow trout. Guest facilities: helicopter pad, kayaks, fishing gear, dinghies. Member of Small Luxury Lodges of the World. Qualmark 5 star guest and hosted.



06

STONEFLY LODGE NELSON

Listed in the Top 10 Ecolodges in Australia and New Zealand.

Centrally located between three spectacular National Parks, the lodge is set on 56 hectares of private forest, just 50 minutes from Nelson. Architecturally designed and built from natural stone and timber acquired from the property, four guest rooms feature en-suites, and private balconies overlooking Motueka River. Highlights: heli fishing (onsite heli pad), hiking tours, wine & art trails, sea kayaking, horse trekking. Dine on seasonal fresh produce. Minimum two night stay. Stay includes DBB. Qualmark 5 star guest and hosted. Enviro Gold.



07

TIRITIRI LODGE WANAKA

Located at the gateway to Mount Aspiring National Park

Six deluxe rooms and suites overlooking lake and alpine views. Built with environmental sensitivity, in a modern elegant style, the lodge features New Zealand artwork throughout and plenty of spaces to rejuvenate. Stay includes B&B, with optional dining on request to suit guests. Local highlights: fly fishing, hiking, scenic flights to Milford Sounds & Mt Aspiring, wine tasting & cycling. Qualmark; 5 star guest & hosted. Enviro Gold.

ACTIVITIES

Experiences that feel good



08

ZEST FOOD TOURS AUCKLAND WELLINGTON WAIRARAPA

Personal sightseeing with food, for discerning food enthusiasts.

In Auckland explore urban café culture, gourmet delights, or inner city foodie locations. Sample fine produce, cheeses, chocolates, exceptional coffee and classic baking treats, seafood delights. In Wellington discover New Zealand's café capital, explore the city, its local tastes, products and people. From Wellington, visit Martinborough Wine Region, and see behind the scenes of premium wine brands and artisan food producers.



09

COUGAR LINE MARLBOROUGH

Located in Picton, Cougar Line is a leading water transportation company, delivery cruises, glorious day walk & mountain biking options on the Queen Charlotte Track, twilight salmon & Sauvignon Blanc cruises, and eco tours.

The Cougar Line has four vessels which supply a regular and reliable service to all points of the Queen Charlotte Sound and a team of highly experienced skipper and hostesses.

12

CLOUD
TWELVE

ANGELA SCOTT
TOURISM MARKETING SPECIALIST

PHONE + 64 6 306 6226
MOBILE +64 21 275 0690
EMAIL angela@cloud12.co.nz
SKYPE cloud12
www.cloud12.co.nz